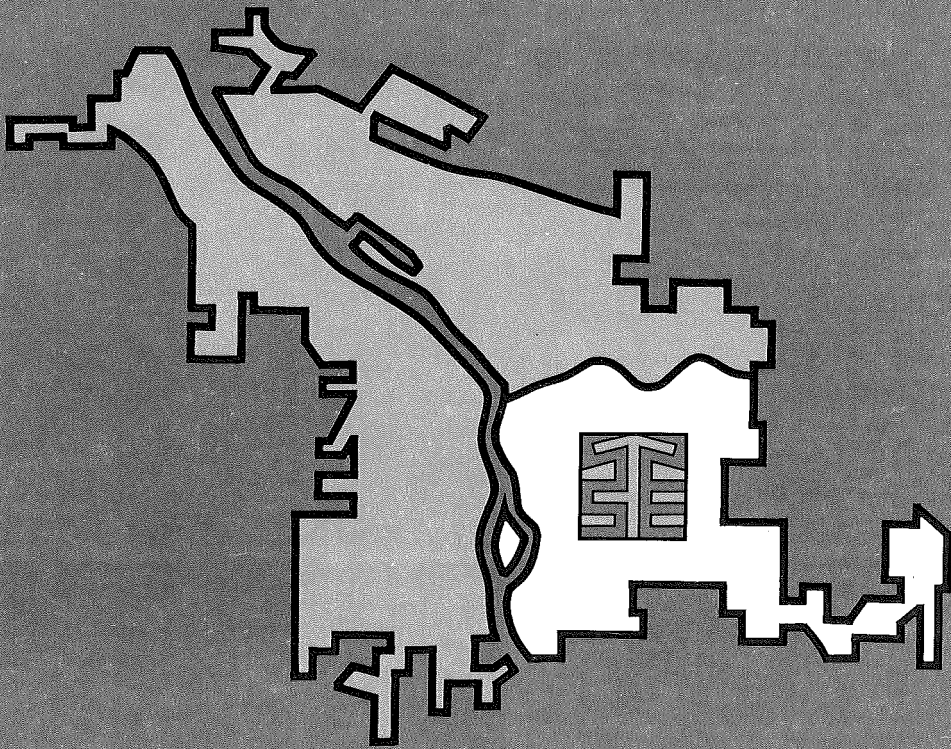


*Felo*

# CITY OF PORTLAND SOUTHEAST UPLIFT PROGRAM

A JOINT PROGRAM FOR IMPROVEMENT BY THE  
CITY OF PORTLAND AND SOUTHEAST RESIDENTS



# **CITY OF PORTLAND SOUTHEAST UPLIFT PROGRAM**

**SOUTHEAST UPLIFT OFFICE  
4316 S. E. HAWTHORNE BOULEVARD  
PORTLAND, OREGON 97215  
TELEPHONE 233-6236, 233-6237**



## **SOUTHEAST UPLIFT PROGRAM COMMITTEE**

### **REPRESENTING ACTION GROUPS:**

**SUNNYSIDE COMMUNITY IMPROVEMENT COMMITTEE  
MRS. BARBARA EVENS**

**BROOKLYN ACTION CORPS  
MRS. FLORENCE MURRAY**

**EAST C.A.P. HOUSING & PLANNING COMMISSION  
MRS. WILLIAM B. CATE**

**RICHMOND COMMUNITY ACTION COMMITTEE  
MRS. SARA COLBY**

**BUCKMAN COMMUNITY ACTION COMMITTEE**

### **AT-LARGE MEMBERS:**

**DENT THOMAS  
THOMAS L. BENTLEY  
FRED A. BOLLEN  
JACK V. BRONLEWE  
FATHER FRANCIS X. DISKIN, C.S.P.  
MRS. BURTON LUNDAHL  
MRS. BETTIE MAYER  
RICHARD PRIESTLEY**

### WHAT IS SOUTHEAST UPLIFT?

Southeast Uplift is a program through which the City of Portland is joining with the citizens of Southeast Portland in a concentrated effort to improve their social and physical environment.

### THE SOUTHEAST UPLIFT PROGRAM COMMITTEE

To assist the citizens of Southeast Portland a thirteen member committee, with alternates, was appointed by Mayor Terry D. Schruck in the spring of 1968. Five of these members represent action groups in Southeast Portland, and eight at-large members complete the committee.

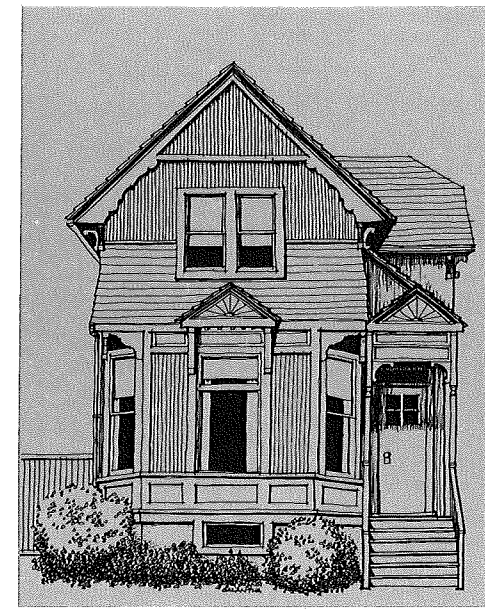
This committee of thirteen has been meeting twice a month since May, 1968. Meetings are held the second and fourth Monday of each month at 7:45 P.M., at the Southeast Uplift Office, 4316 S. E. Hawthorne Blvd. General meetings will be scheduled periodically, and it is hoped that all residents of the area will attend. Visits and calls to the office are always welcome.

### WHAT ARE THE GOALS OF THE COMMITTEE?

The Southeast Uplift Committee has determined that Southeast Portland has many problems to solve and is considering ideas which will lead to their solution. Of these problems, the Committee, through extensive review and discussion of orientation material, has determined that improvements in housing, employment, and education are of prime importance and will emphasize action in these areas. Other areas proposed for improvement are street repair, traffic patterns, schools, parks and playgrounds, and transportation.



DETERIORATION



REHABILITATION

### HOW DOES THE COMMITTEE FUNCTION?

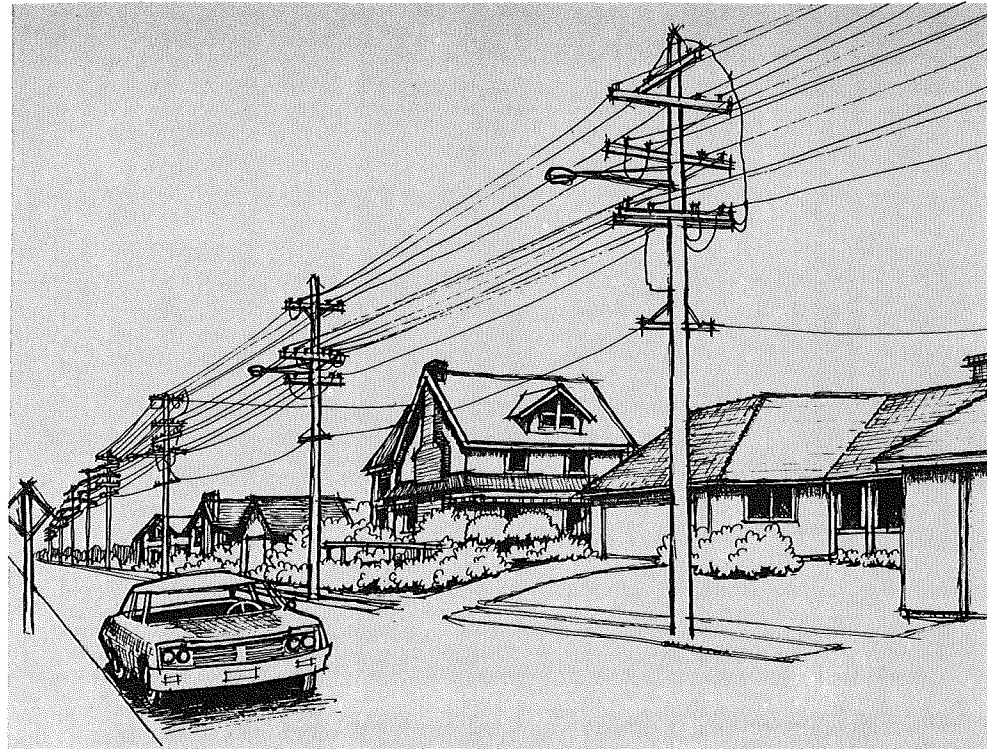
Besides deliberating and setting Southeast Uplift policy, committee members are responsible for working with organizations and residents of assigned portions of the Southeast Uplift Area. They will be responsible for the exchange of information between organizations and residents and the Uplift Committee. They will encourage and stimulate citizens' participation and offer their services toward organization of the residents of their area.

### **WHAT ARE THE RESPONSIBILITIES OF THE SOUTHEAST UPLIFT OFFICE?**

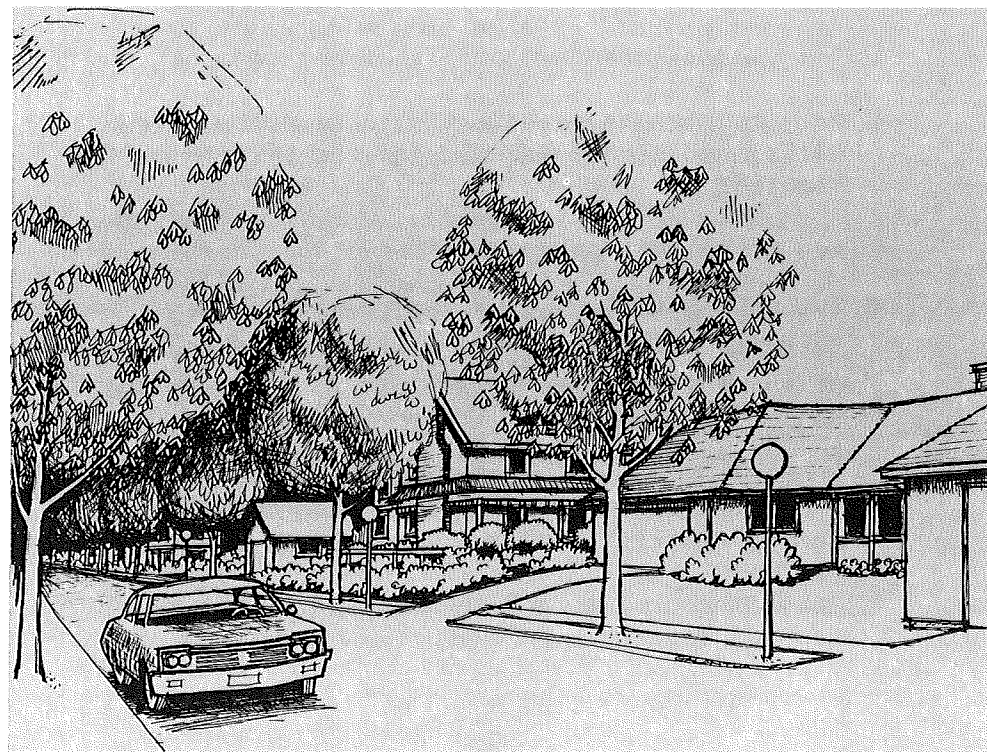
At the request of Mayor Terry D. Schruck and Commissioner Francis J. Ivancie, the Portland Development Commission and the Portland City Planning Commission have assigned staff to man the Southeast Uplift Office at 4316 SE Hawthorne, telephone 233-6235. The office staff exists to serve the citizens of the area. Office personnel will be responsible for receiving citizens' complaints and suggestions and will promote and maintain an effective liaison between federal, city and state agencies, the Southeast Uplift Committee and citizens in the area. Appropriate action on each complaint will be determined by the Committee or staff, and follow up and call back service will be maintained. The staff also will assist the Committee members with their duties, make recommendations to the Committee, and carry out its decisions.

### **HOW CAN SOUTHEAST RESIDENTS HELP?**

Southeast residents are encouraged to attend meetings of groups in their area and of the Southeast Uplift Committee, bring in ideas of what problems exist and how to solve them, work to upgrade their immediate neighborhood, become informed, and speak with each other. Organizations and individuals in the Southeast Area will be asked to assist by evaluating their neighborhood and noting characteristics which, in their opinion, require improvement.

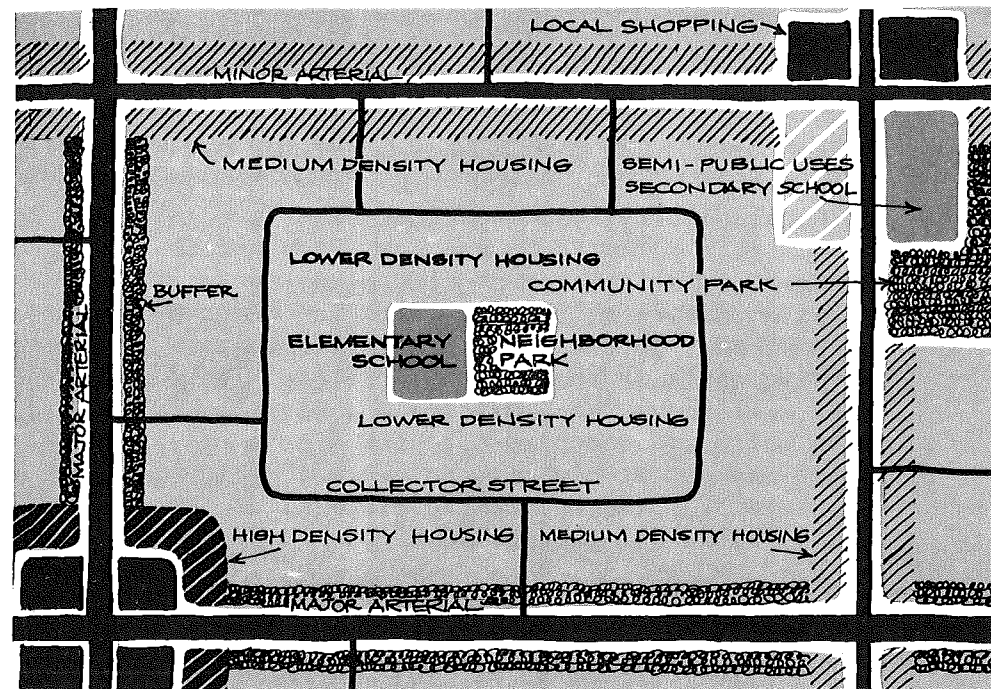


**IMPROVEMENT OF STREET APPEARANCE**



## NEIGHBORHOOD EVALUATION CHECK LIST

- Is there an elementary school, with adequate facilities and in good repair, centrally located and within safe, convenient walking distance from all parts of your neighborhood?
- Is a neighborhood park, with adequate play space, located adjacent to the elementary school?
- Is your neighborhood free of through traffic, a safe place to walk?
- Is the housing in your neighborhood well maintained, or is it deteriorating? Is there sufficient off-street parking?
- Are there trees, shrubs and flowers on the residential properties? Are the lawns and plants well cared for?
- Are vacant lots free of litter and safe for play?
- Are the streets paved? Are there curbs, sidewalks, and street trees? Are the streets well lighted?
- Are the alleys paved and free of litter?
- Are the necessary water, sewer and utility services available? Are utility lines underground whenever possible?
- Is fire protection adequate?
- Are all properties used in compliance with city zoning restrictions?
- Are commercial establishments infringing on housing areas?



## STRUCTURE OF A GOOD NEIGHBORHOOD

- Are areas of higher density housing located adjacent to arterial streets for better access?
- Are churches well located and with adequate parking? Is a branch library near-by?
- Are a secondary school and community park, semi-public uses, and local shopping accessible within convenient distance via the city's arterial street system?
- Are the city's industrial areas; downtown and regional business centers; regional educational, recreational and cultural facilities; and inter-city transportation facilities conveniently and safely accessible via the city's system of major traffic-ways?
- Is there an adequate mass transit system providing access to other areas of the city?

## **WHAT ARE THE RESPONSIBILITIES OF THE PORTLAND CITY PLANNING COMMISSION?**

The Portland City Planning Commission is providing staff members who are qualified and experienced in all phases of city planning activities necessary to carry out the functions of the Southeast Uplift Program relative to the planning goals of the City of Portland. This staff will serve the Committee and work toward plans which are acceptable to the area's residents and compatible with an overall, long-range plan for the optimum development of Southeast Portland and the entire city.

## **WHAT ARE THE RESPONSIBILITIES OF THE PORTLAND DEVELOPMENT COMMISSION?**

The Portland Development Commission is responsible for administration of the Southeast Uplift Program. In this capacity the Development Commission is the city agency designated for disbursement of all funds relative to its administrative costs. This includes both city funds and, as eligibilities are obtained, city and federal funds designated for projects eligible for federal assistance. It also is its responsibility to provide sufficient office staff for carrying out the activities of the program, to provide office space for the staff and meeting room space for the Committee. The Portland Development Commission is also actively participating in the program in a liaison capacity between the local program and federal agencies in an effort to obtain approval for federal assistance.

**THE SOUTHEAST UPLIFT PROGRAM BELONGS TO YOU, THE CITIZEN!**

**ITS SUCCESS DEPENDS ON YOU!**



PREPARED BY THE PORTLAND CITY PLANNING COMMISSION  
AND THE PORTLAND DEVELOPMENT COMMISSION 12-7-68

